

## Theme 1 Children, Young People and Families

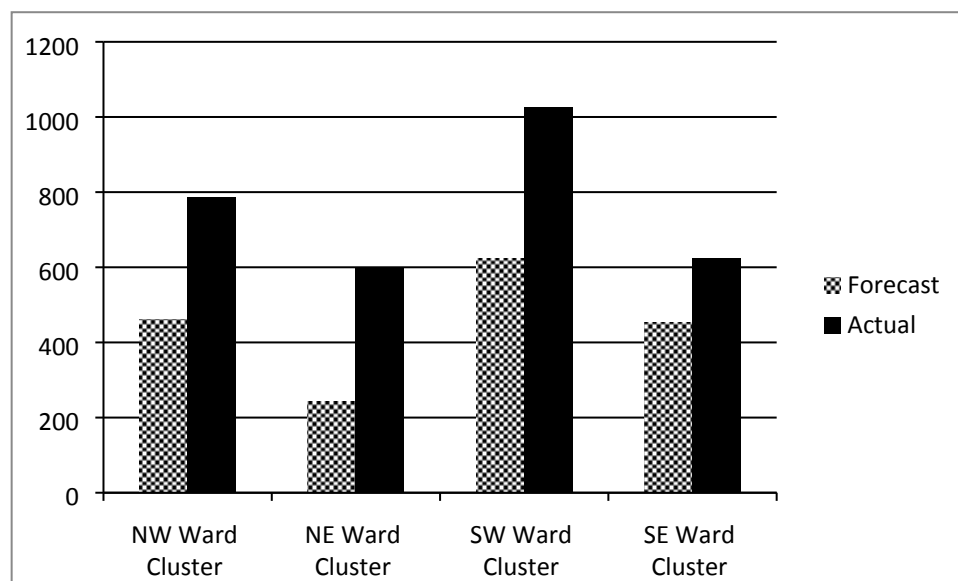
### MSG Programme Period 8 (Jul-Sep 2017) Performance Report

**Theme 1 – Children, Young People & Families:** This theme focuses on seeking the following key outcomes:

- Improved levels of participation, educational attainment and progression for children and young people.
- Children and young people are protected from harm and families are supported to provide a safe environment.
- Harmful relationships among peer/gender groups are reduced.
- Improved physical (such as reduced levels of obesity) and emotional health and wellbeing in children and young people.
- Reduced levels of substance misuse and sexual abuse, violent crime (including domestic violence) and anti-social behaviour.

### Geographical Breakdown

The table below shows the number of beneficiaries supported during the period July to September 2017 by Ward Cluster:



NW Ward Cluster	NE Ward Cluster	SW Ward Cluster	SE Ward Cluster
<ul style="list-style-type: none"> <li>• Bethnal Green</li> <li>• Spitalfields &amp; Banglatown</li> <li>• St Peter's</li> <li>• Weavers</li> </ul>	<ul style="list-style-type: none"> <li>• Bow East</li> <li>• Bow West</li> <li>• Bromley North</li> <li>• Bromley South</li> <li>• Mile End</li> </ul>	<ul style="list-style-type: none"> <li>• Shadwell</li> <li>• St Dunstons</li> <li>• St Katherine's &amp; Wapping</li> <li>• Stepney Green</li> <li>• Whitechapel</li> </ul>	<ul style="list-style-type: none"> <li>• Blackwall &amp; Cubitt Town</li> <li>• Canary Wharf</li> <li>• Island Gardens</li> <li>• Lansbury</li> <li>• Limehouse</li> <li>• Poplar</li> </ul>

### **Raising Attainment Project Portfolio – Children’s Services**

No. of live projects – Jul-Sep 2017	No. of projects classed as <b>GREEN</b>	No. of projects classed as <b>AMBER</b>	No. of projects classed as <b>RED</b>
9	9	0	0

There are 9 projects in this category; all classed as ‘Green’ and meeting the agreed expenditure targets, service outputs and outcomes as indicated in monitoring reports and case studies received. All projects are working closely with schools and parents to provide reciprocal feedback on their young students. Officers will continue to work with organisations to ensure quality driven provision.

### **Vulnerable & Excluded Families Project Portfolio – Children’s Services**

No. of live projects – Jul-Sep 2017	No. of projects classed as <b>GREEN</b>	No. of projects classed as <b>AMBER</b>	No. of projects classed as <b>RED</b>
6	6	0	0

There are 6 projects in this category; all of which are classed as ‘Green’ and are on course to meet the agreed expenditure targets, service outputs and outcomes as indicated in monitoring reports received.

### **Community Languages Project Portfolio - CLC**

No. of live projects – Jul-Sep 2017	No. of projects classed as <b>GREEN</b>	No. of projects classed as <b>AMBER</b>	No. of projects classed as <b>RED</b>
10	9	0	1

There are 10 projects in this category; 9 of which are classed as ‘Green’ and are on course to meet the agreed expenditure targets, service outputs and outcomes as indicated in monitoring reports received.

1 project classed as Red:

### **Culloden Bangladeshi Parents Association - Culloden Bengali Mother Tongue Programme**

Due to the level of award this project requires bi-annual monitoring visits. The last monitoring visit took place on the 27 September 2017. Assessment of the quarterly return has highlighted issues particularly around finances that will need to be resolved before payment can be made.

### Youth Services Project Portfolio - CLC

No. of live projects – Jul-Sep 2017	No. of projects classed as <b>GREEN</b>	No. of projects classed as <b>AMBER</b>	No. of projects classed as <b>RED</b>
16	15	0	1

There are 16 projects in this category; 15 of which are classed as 'Green' and are on course to meet the agreed expenditure targets, service outputs and outcomes as indicated in monitoring reports received.

1 project is classed as Red:

### Our Base LTD - One Stop Youth Service

Our Base had suspended project delivery and for this reason is Red performance rated. Our Base hopes to resume a full service on both parties completing the lease arrangements.

Last Monitoring visit- 15 February 2017

Individual Mayoral Decision 12 September 2017:

That in acknowledgement of Our Base signing the Heads of Terms and in so doing demonstrating a willingness to enter into an appropriate agreement, pending the Council progressing the lease to conclusion, the MSG withheld payments for the period January 2017 - June 2017 be released subject to satisfactory performance

Grants Determination Sub-Committee 24 October 2017:

1. That the committee note the progress being made with Our Base in respect of premises and a premises update be provided in the next MSG quarterly monitoring report (July to September 2017).
2. That the outstanding lease/premises issues and performance monitoring work be resolved before funds can be released.

### Sports Project Portfolio - CLC

No. of live projects – Jul-Sep 2017	No. of projects classed as <b>GREEN</b>	No. of projects classed as <b>AMBER</b>	No. of projects classed as <b>RED</b>
6	4	0	2

There are 6 active projects in this category; 4 of which are classed as 'Green' and are on course to meet the agreed expenditure targets,

service outputs and outcomes as indicated in monitoring reports received.

One project has been removed from the programme:

### **Children Education Group – Berner Football Academy**

Decision of 24 October 2017 Grants Determination Sub-Committee:  
In acknowledgement that the CEG have been Red rated for performance for a period of 12 months due to the premises issues which remain unresolved, mindful too that CEG projects delivery have ceased as a consequence of grant funding being suspended, CEG be removed from the MSG programme.

2 projects are classed as Red:

### **Tower Hamlets Youth Sports Foundation – Hub Club Programme**

This project continues to demonstrate satisfactory performance ratings against outputs and outcomes in the offer letter. Due to the level of award this project requires bi-annual monitoring visits. The last monitoring visit, 28 September 2017, evidenced achievements and confirmed ongoing conditions continue to be met. Premises agreements do not have all the required information so the Oct-Dec 17 advance payment withheld in line with the Corporate Director Resources delegated decision.

### **Tower Hamlets Youth Sports Foundation – Stepping Stones Programme**

This project continues to demonstrate satisfactory performance ratings against outputs and outcomes in the offer letter. Due to the level of award this project requires bi-annual monitoring visits. The last monitoring visit, 28 September 2017, evidenced achievements and confirmed ongoing conditions continue to be met. Premises agreements do not have all the required information so the Oct-Dec 17 advance payment withheld in line with the Corporate Director Resources delegated decision.

### **Culture Project Portfolio - CLC**

No. of live projects – Apr-Jun 2017	No. of projects classed as <b>GREEN</b>	No. of projects classed as <b>AMBER</b>	No. of projects classed as <b>RED</b>
8	7	0	1

There are 8 active projects in this category; 7 classed as 'Green' and are on course to meet the agreed expenditure targets, service outputs and outcomes as indicated in monitoring reports received.

1 project classed as Red:

**Pollyanna Training Theatre - Musical Theatre & Performance Arts Course**

Decision from 9 May 2017 Grants Determination (Cabinet) Sub-Committee:

- a) in view of the ongoing work relating to premises issues and ongoing review of arrangements of Pollyanna Training Theatre, no payments be made and the project be Red rated until the satisfactory outcome of the review (including premises arrangements).
- b) in the event that the review is concluded satisfactorily and in light of underperformance in respect of the project beneficiaries discussed at Grants Spotlight Review Panel on 28th April 2017, performance then be Amber rated.

Project has been under-performing on targets for recruiting new beneficiaries. Its recruitment of beneficiaries from black, Asian and minority ethnic (BAME) communities has been lower than originally estimated. It has become involved in outreach sessions to attract new beneficiaries, particularly from BAME communities. The Theatre has put forward a significant variation request to reduce targets for new starts and the percentage of beneficiaries from BAME communities. It now regards its initial estimates of what the project could achieve in these areas to be unrealistic.